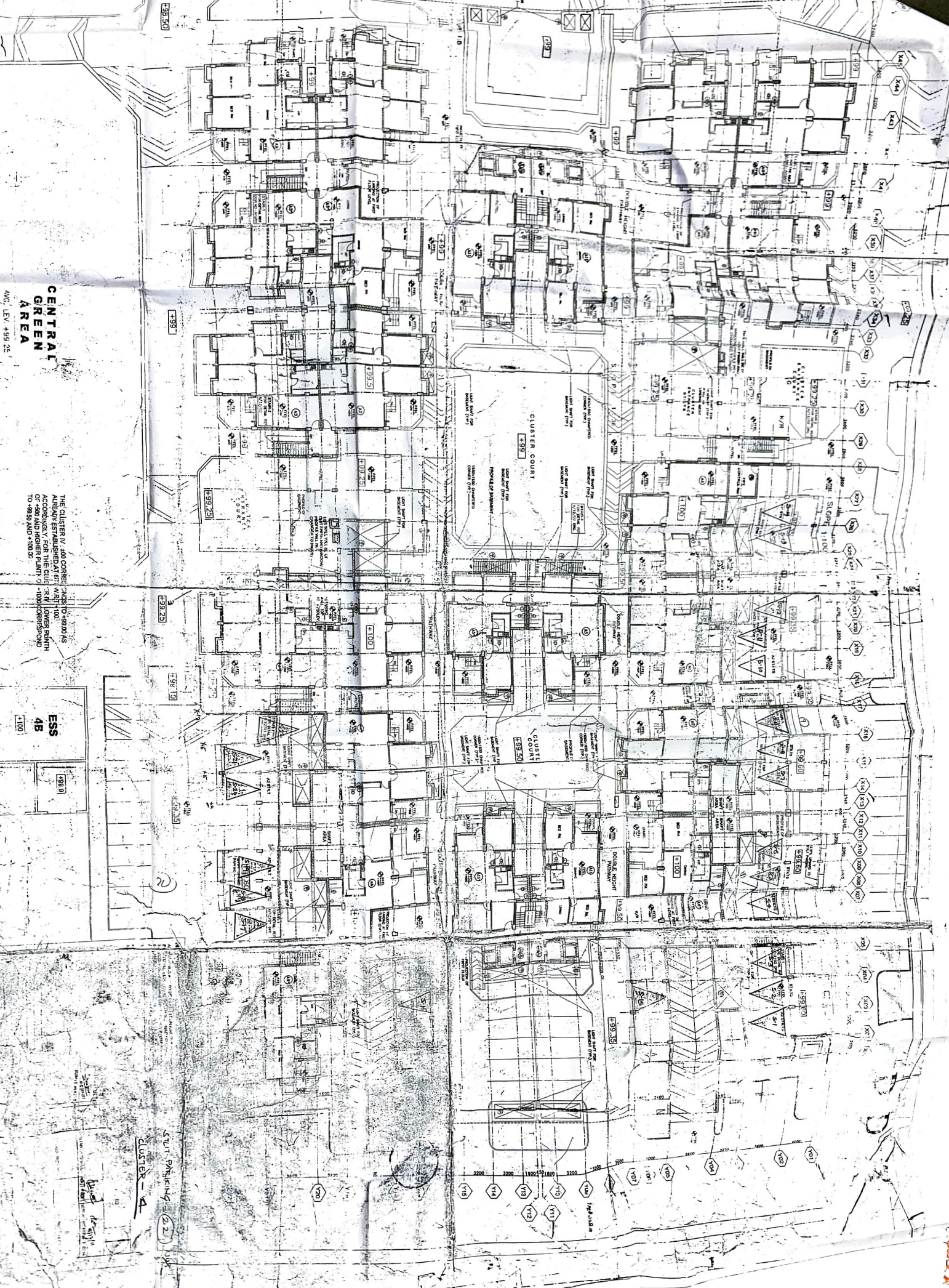


CENTRAL GREEN AREA
AUG. LEV. 499.25'

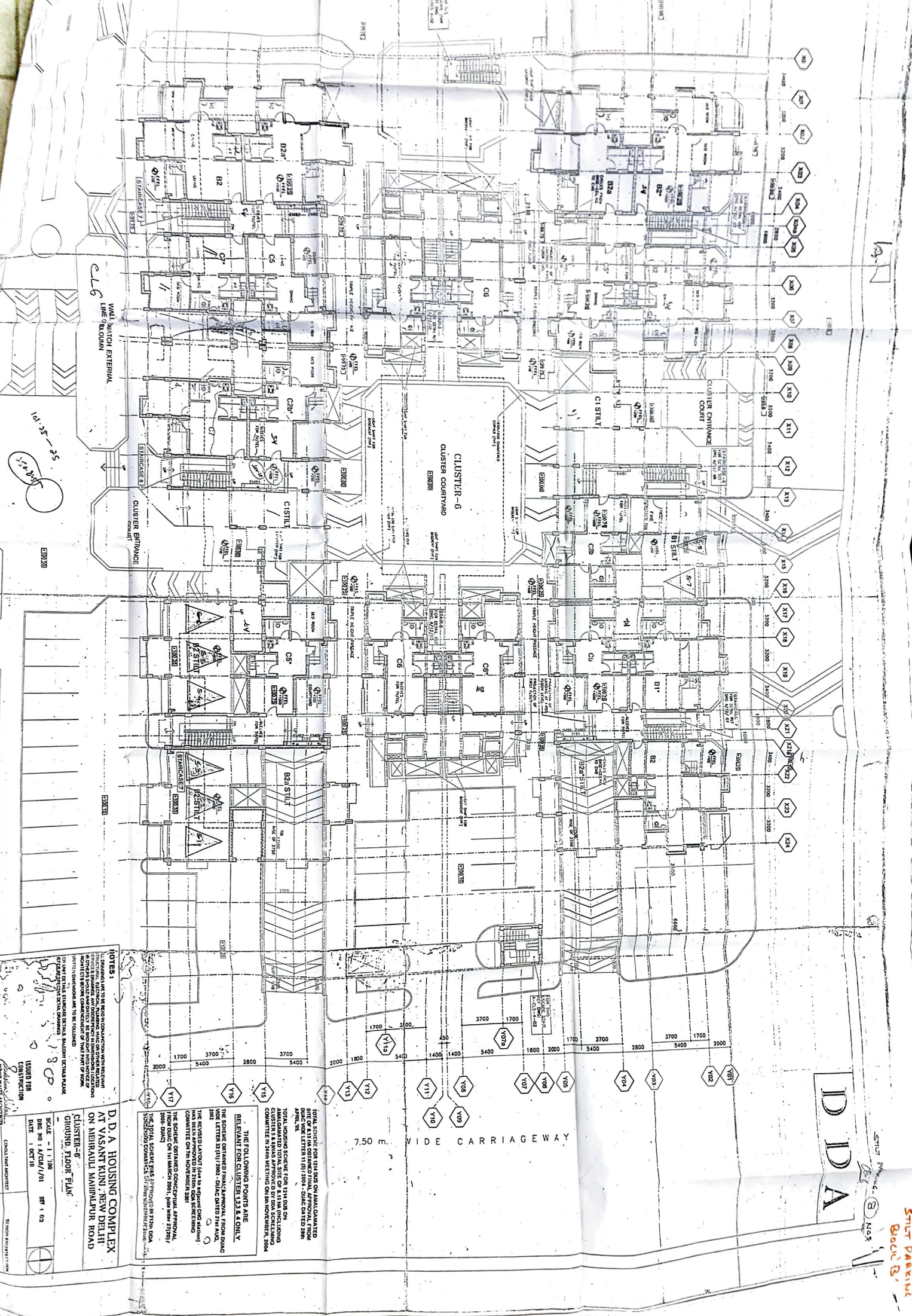
THE CLUSTER IV AND CORNER CLUSTER V ARE TO BE CONSTRUCTED IN PHASES. THE CLUSTER IV IS TO BE CONSTRUCTED FIRST, FOLLOWED BY THE CORNER CLUSTER V. THE CLUSTER IV IS TO BE CONSTRUCTED IN PHASES. THE CLUSTER IV IS TO BE CONSTRUCTED IN PHASES. THE CLUSTER IV IS TO BE CONSTRUCTED IN PHASES.

ESS 4B
1000

START PARKING (22) CLUSTER A



Block A



CLUSTER-6
CLUSTER COURTYARD

WALL MATCH EXTERNAL
LINE TO DOWN

10.5-25
10.5-25

NOTES:
1. DRAWING TO BE USED IN CONNECTION WITH THE...
2. THE SCHEMATIC APPROVAL FOR THIS PLAN...
3. THE SCHEMATIC APPROVAL FOR THIS PLAN...
4. THE SCHEMATIC APPROVAL FOR THIS PLAN...

D. D. A. HOUSING COMPLEX
AT VASANT KUNI, NEW DELHI
ON NEHRUJI MANIPALPUR ROAD

CLUSTER-6
GROUND FLOOR PLAN

SCALE - 1:100
DATE: 1. OCT 16

THE FOLLOWING POINTS ARE
RELEVANT FOR CLUSTER 6 & ONLY
THE SCHEMATIC APPROVAL FOR THIS PLAN...
THE SCHEMATIC APPROVAL FOR THIS PLAN...
THE SCHEMATIC APPROVAL FOR THIS PLAN...

DDA

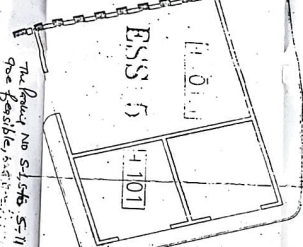
7.50 E WIDE CARRIAGEWAY

STREET PARKING
BLOCK B



THE TOTAL SCHEME WAS APPROVED IN 1970 ON 28/11/70 AND THE SCHEME WAS APPROVED IN 1970 ON 28/11/70 AND THE SCHEME WAS APPROVED IN 1970 ON 28/11/70

THE FOLLOWING POINTS ARE RELEVANT FOR CLUSTER 1, 2 & 3 ONLY. THE SCHEME WAS APPROVED IN 1970 ON 28/11/70 AND THE SCHEME WAS APPROVED IN 1970 ON 28/11/70



FOR THE CLUSTER 2 AND CORRESPONDS TO 110/25 ACCORDING TO THE CLUSTER 2 CONCEPT PLAN AS A READY ESTABLISHED AT THE WPT 1100

NOTES:

1. THE SCHEME WAS APPROVED IN 1970 ON 28/11/70 AND THE SCHEME WAS APPROVED IN 1970 ON 28/11/70
2. THE SCHEME WAS APPROVED IN 1970 ON 28/11/70 AND THE SCHEME WAS APPROVED IN 1970 ON 28/11/70
3. THE SCHEME WAS APPROVED IN 1970 ON 28/11/70 AND THE SCHEME WAS APPROVED IN 1970 ON 28/11/70

CLIENT: D.D.A HOUSING CORP. IN A WASHINGTON, N.W. 1100 ON WILSON BLVD. N.W. 1100

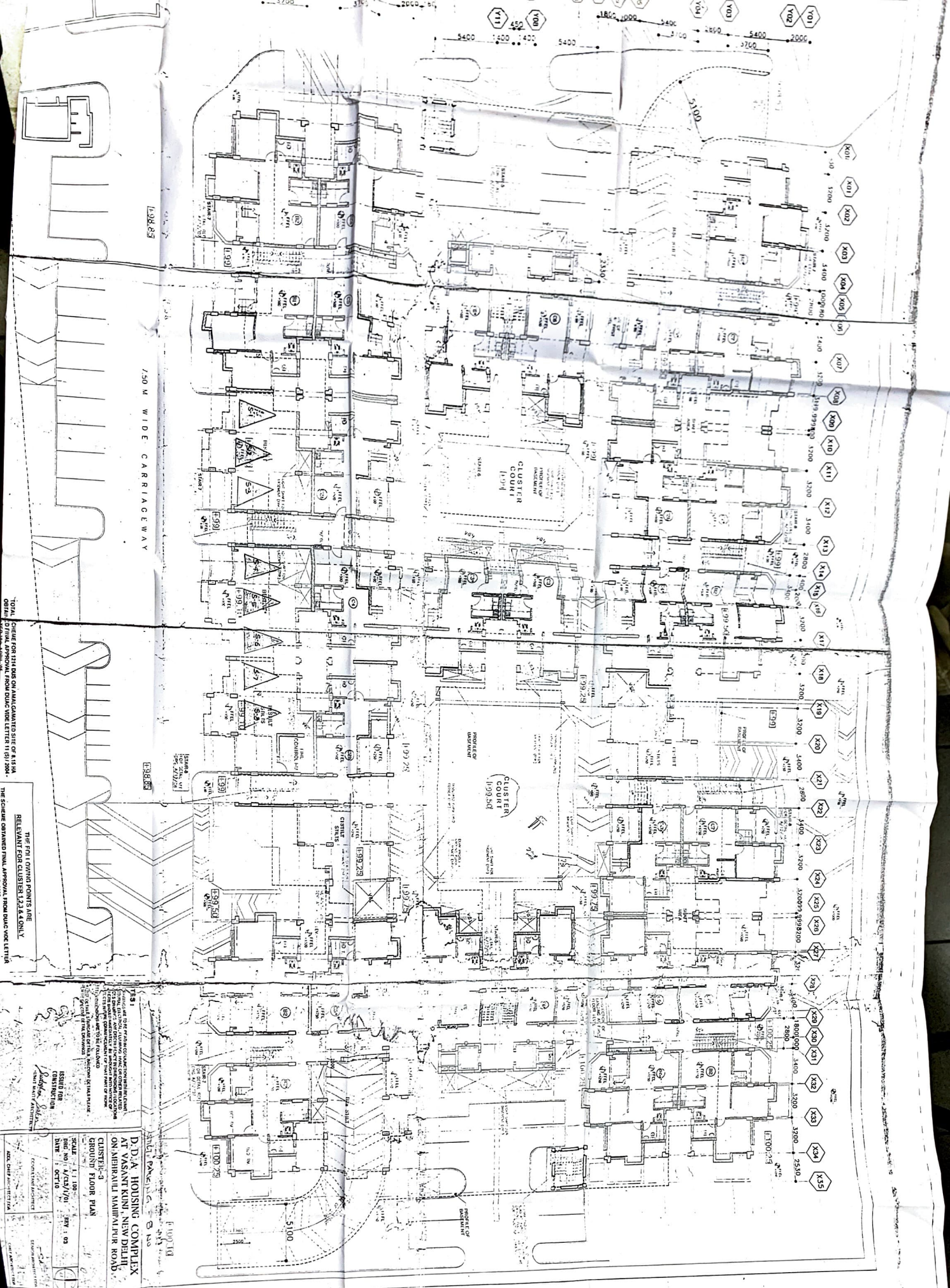
ARCHITECT: STUART HARTY ARCHITECTS

DATE: 11/70

SCALE: 1/8" = 1'-0"

CLUSTER 5
ST-1 PARKING 11 NWS
Block 'C'

NOTE - THE NUMBERING OF BUILT CAR PARKING HAS BEEN MARKED ON THE BASIS OF EASTING



750 M WIDE CARRIAGEWAY

CLUSTER COURT I-99.54

CLUSTER COURT I-99.58

TOTAL SHEET FOR 121 SHEETS ON AN UNCALCULATED SITE OF 41.5 HA
 ORIGINAL APPROVAL FROM D.D.C. VIDE LETTER 11/91/2000
 THE SCHEME CHANGES FINAL APPROVAL FROM D.D.C. VIDE LETTER

THE FOLI OWNING POINTS ARE
 RELEVANT FOR CLUSTER I-99.54 ONLY

THIS SET OF DRAWINGS IS THE PROPERTY OF THE ARCHITECT AND IS TO BE USED ONLY FOR THE PROJECT AND SITE SPECIFICALLY MENTIONED THEREIN. IT IS NOT TO BE REPRODUCED, COPIED, EITHER WHOLLY OR IN PART, OR TRANSMITTED IN ANY FORM OR BY ANY MEANS, ELECTRONIC OR MECHANICAL, INCLUDING PHOTOCOPYING, RECORDING, OR BY ANY INFORMATION STORAGE AND RETRIEVAL SYSTEM, WITHOUT THE WRITTEN PERMISSION OF THE ARCHITECT. THE ARCHITECT ACCEPTS NO LIABILITY FOR ANY DAMAGE OR LOSS OF ANY KIND, INCLUDING CONSTRUCTION COSTS, ARISING FROM THE USE OF THESE DRAWINGS. THE USER OF THESE DRAWINGS IS ADVISED THAT THE ARCHITECT HAS NOT BEEN ADVISED OF ANY CHANGES TO THE REGULATIONS OR STANDARDS APPLICABLE TO THE PROJECT SINCE THE DATE OF THE ORIGINAL APPROVAL. THE USER OF THESE DRAWINGS IS ADVISED THAT THE ARCHITECT HAS NOT BEEN ADVISED OF ANY CHANGES TO THE REGULATIONS OR STANDARDS APPLICABLE TO THE PROJECT SINCE THE DATE OF THE ORIGINAL APPROVAL.

D.D.A. HOUSING COMPLEX
 AT VASANTKUNJ, NEW DELHI
 ON AMBHALI MANDALPUR ROAD
 CLUSTER-3
 GROUND FLOOR PLAN
 SCALE: 1:100
 REF NO: A/CS/701
 DATE: OCT 10
 REV: 03
 PROJECT OF GOVERNMENT OF DELHI

STILL PAPER
 BLOCK-11D

1376 - 6' 6" x 7' 6" - 212121
 L16 - 8' 6" x 7' 6" - 212121
 1377 - 6' 6" x 7' 6" - 212121
 1378 - 6' 6" x 7' 6" - 212121
 1379 - 6' 6" x 7' 6" - 212121
 1380 - 6' 6" x 7' 6" - 212121
 1381 - 6' 6" x 7' 6" - 212121
 1382 - 6' 6" x 7' 6" - 212121
 1383 - 6' 6" x 7' 6" - 212121
 1384 - 6' 6" x 7' 6" - 212121
 1385 - 6' 6" x 7' 6" - 212121
 1386 - 6' 6" x 7' 6" - 212121
 1387 - 6' 6" x 7' 6" - 212121
 1388 - 6' 6" x 7' 6" - 212121
 1389 - 6' 6" x 7' 6" - 212121
 1390 - 6' 6" x 7' 6" - 212121
 1391 - 6' 6" x 7' 6" - 212121
 1392 - 6' 6" x 7' 6" - 212121
 1393 - 6' 6" x 7' 6" - 212121
 1394 - 6' 6" x 7' 6" - 212121
 1395 - 6' 6" x 7' 6" - 212121
 1396 - 6' 6" x 7' 6" - 212121
 1397 - 6' 6" x 7' 6" - 212121
 1398 - 6' 6" x 7' 6" - 212121
 1399 - 6' 6" x 7' 6" - 212121
 1400 - 6' 6" x 7' 6" - 212121
 1401 - 6' 6" x 7' 6" - 212121
 1402 - 6' 6" x 7' 6" - 212121
 1403 - 6' 6" x 7' 6" - 212121
 1404 - 6' 6" x 7' 6" - 212121
 1405 - 6' 6" x 7' 6" - 212121
 1406 - 6' 6" x 7' 6" - 212121
 1407 - 6' 6" x 7' 6" - 212121
 1408 - 6' 6" x 7' 6" - 212121
 1409 - 6' 6" x 7' 6" - 212121
 1410 - 6' 6" x 7' 6" - 212121
 1411 - 6' 6" x 7' 6" - 212121
 1412 - 6' 6" x 7' 6" - 212121
 1413 - 6' 6" x 7' 6" - 212121
 1414 - 6' 6" x 7' 6" - 212121
 1415 - 6' 6" x 7' 6" - 212121
 1416 - 6' 6" x 7' 6" - 212121
 1417 - 6' 6" x 7' 6" - 212121
 1418 - 6' 6" x 7' 6" - 212121
 1419 - 6' 6" x 7' 6" - 212121
 1420 - 6' 6" x 7' 6" - 212121
 1421 - 6' 6" x 7' 6" - 212121
 1422 - 6' 6" x 7' 6" - 212121
 1423 - 6' 6" x 7' 6" - 212121
 1424 - 6' 6" x 7' 6" - 212121
 1425 - 6' 6" x 7' 6" - 212121
 1426 - 6' 6" x 7' 6" - 212121
 1427 - 6' 6" x 7' 6" - 212121
 1428 - 6' 6" x 7' 6" - 212121
 1429 - 6' 6" x 7' 6" - 212121
 1430 - 6' 6" x 7' 6" - 212121
 1431 - 6' 6" x 7' 6" - 212121
 1432 - 6' 6" x 7' 6" - 212121
 1433 - 6' 6" x 7' 6" - 212121
 1434 - 6' 6" x 7' 6" - 212121
 1435 - 6' 6" x 7' 6" - 212121
 1436 - 6' 6" x 7' 6" - 212121
 1437 - 6' 6" x 7' 6" - 212121
 1438 - 6' 6" x 7' 6" - 212121
 1439 - 6' 6" x 7' 6" - 212121
 1440 - 6' 6" x 7' 6" - 212121
 1441 - 6' 6" x 7' 6" - 212121
 1442 - 6' 6" x 7' 6" - 212121
 1443 - 6' 6" x 7' 6" - 212121
 1444 - 6' 6" x 7' 6" - 212121
 1445 - 6' 6" x 7' 6" - 212121
 1446 - 6' 6" x 7' 6" - 212121
 1447 - 6' 6" x 7' 6" - 212121
 1448 - 6' 6" x 7' 6" - 212121
 1449 - 6' 6" x 7' 6" - 212121
 1450 - 6' 6" x 7' 6" - 212121
 1451 - 6' 6" x 7' 6" - 212121
 1452 - 6' 6" x 7' 6" - 212121
 1453 - 6' 6" x 7' 6" - 212121
 1454 - 6' 6" x 7' 6" - 212121
 1455 - 6' 6" x 7' 6" - 212121
 1456 - 6' 6" x 7' 6" - 212121
 1457 - 6' 6" x 7' 6" - 212121
 1458 - 6' 6" x 7' 6" - 212121
 1459 - 6' 6" x 7' 6" - 212121
 1460 - 6' 6" x 7' 6" - 212121
 1461 - 6' 6" x 7' 6" - 212121
 1462 - 6' 6" x 7' 6" - 212121
 1463 - 6' 6" x 7' 6" - 212121
 1464 - 6' 6" x 7' 6" - 212121
 1465 - 6' 6" x 7' 6" - 212121
 1466 - 6' 6" x 7' 6" - 212121
 1467 - 6' 6" x 7' 6" - 212121
 1468 - 6' 6" x 7' 6" - 212121
 1469 - 6' 6" x 7' 6" - 212121
 1470 - 6' 6" x 7' 6" - 212121
 1471 - 6' 6" x 7' 6" - 212121
 1472 - 6' 6" x 7' 6" - 212121
 1473 - 6' 6" x 7' 6" - 212121
 1474 - 6' 6" x 7' 6" - 212121
 1475 - 6' 6" x 7' 6" - 212121
 1476 - 6' 6" x 7' 6" - 212121
 1477 - 6' 6" x 7' 6" - 212121
 1478 - 6' 6" x 7' 6" - 212121
 1479 - 6' 6" x 7' 6" - 212121
 1480 - 6' 6" x 7' 6" - 212121
 1481 - 6' 6" x 7' 6" - 212121
 1482 - 6' 6" x 7' 6" - 212121
 1483 - 6' 6" x 7' 6" - 212121
 1484 - 6' 6" x 7' 6" - 212121
 1485 - 6' 6" x 7' 6" - 212121
 1486 - 6' 6" x 7' 6" - 212121
 1487 - 6' 6" x 7' 6" - 212121
 1488 - 6' 6" x 7' 6" - 212121
 1489 - 6' 6" x 7' 6" - 212121
 1490 - 6' 6" x 7' 6" - 212121
 1491 - 6' 6" x 7' 6" - 212121
 1492 - 6' 6" x 7' 6" - 212121
 1493 - 6' 6" x 7' 6" - 212121
 1494 - 6' 6" x 7' 6" - 212121
 1495 - 6' 6" x 7' 6" - 212121
 1496 - 6' 6" x 7' 6" - 212121
 1497 - 6' 6" x 7' 6" - 212121
 1498 - 6' 6" x 7' 6" - 212121
 1499 - 6' 6" x 7' 6" - 212121
 1500 - 6' 6" x 7' 6" - 212121

DDA

15M WIDE CARRIAGEWAY

NOTE - THE NUMBERING OF STILL CAR PARKING HAS BEEN MARKED ON THE BASIS OF FEASIBILITY SUBMITTED BY ENGINEERING WING.

ONLY USE FOR STILL CAR PARKING NUMBERING.

28 Nos. Still parking are feasible

DDA HOUSING COMPLEX
 AT VASANT KUNJ, NEW DELHI
 ON MERRINDI MAINPURA ROAD
 CURRENT FLOOR PLAN
 (TOTAL 28 Nos. PARKING)

NOTES:

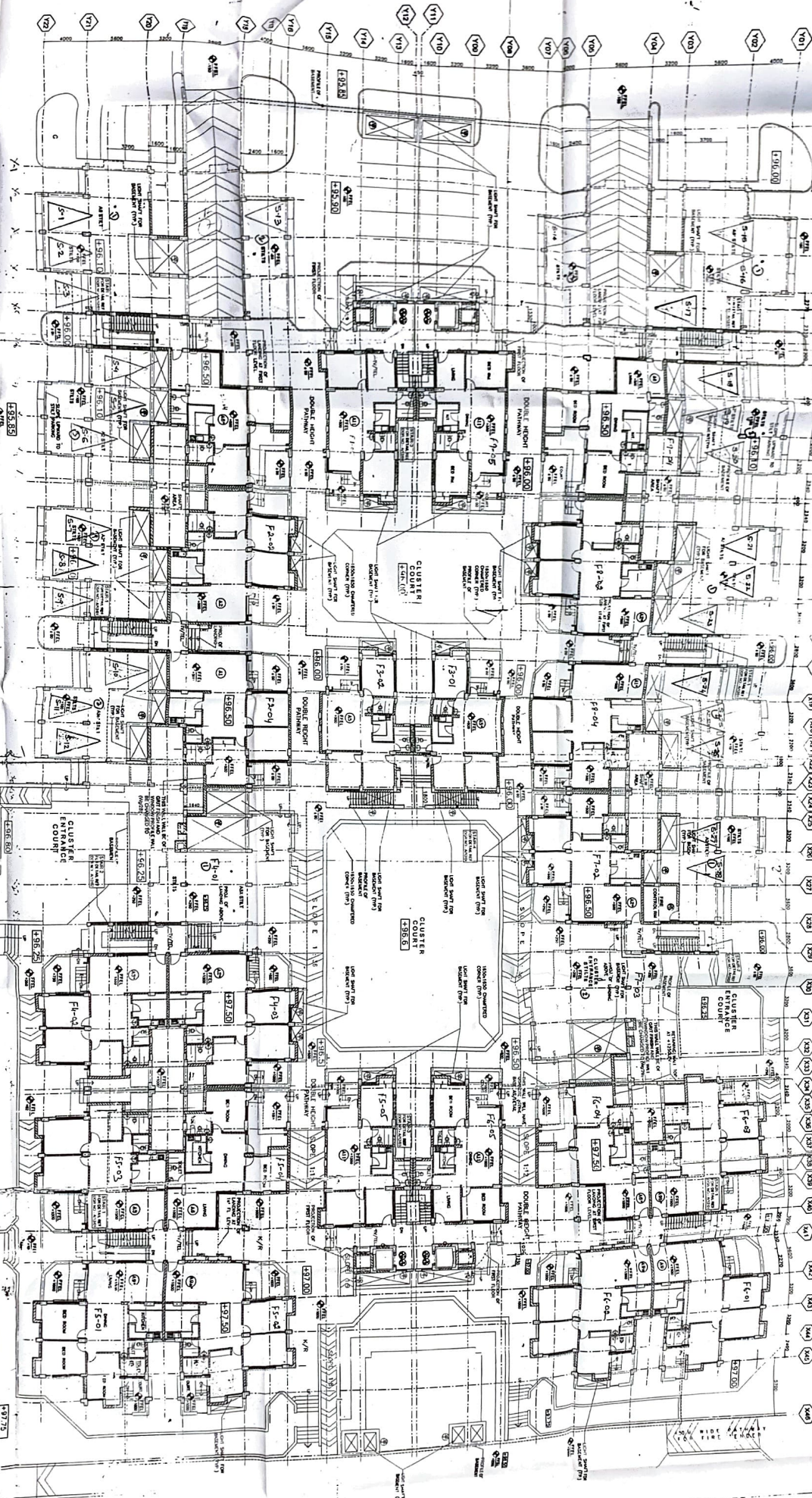
1. THE CAR PARKING SPACES ARE INDICATED BY CIRCLES AND TRIANGLES.
2. THE SPACES ARE NUMBERED ON THE BASIS OF FEASIBILITY SUBMITTED BY ENGINEERING WING.
3. THE SPACES ARE TO BE USED ONLY FOR STILL CAR PARKING.
4. THE SPACES ARE TO BE USED ONLY FOR THE CURRENT FLOOR PLAN.
5. THE SPACES ARE TO BE USED ONLY FOR THE CURRENT FLOOR PLAN.
6. THE SPACES ARE TO BE USED ONLY FOR THE CURRENT FLOOR PLAN.
7. THE SPACES ARE TO BE USED ONLY FOR THE CURRENT FLOOR PLAN.
8. THE SPACES ARE TO BE USED ONLY FOR THE CURRENT FLOOR PLAN.
9. THE SPACES ARE TO BE USED ONLY FOR THE CURRENT FLOOR PLAN.
10. THE SPACES ARE TO BE USED ONLY FOR THE CURRENT FLOOR PLAN.

SCALE: 1:100
 DRAWN BY: [Signature]
 CHECKED BY: [Signature]

NO.	DESCRIPTION	AREA (SQ. FT.)	REMARKS
1	CLUSTER A	1000	
2	CLUSTER B	1000	
3	CLUSTER C	1000	
4	CLUSTER D	1000	
5	CLUSTER E	1000	
6	CLUSTER F	1000	
7	CLUSTER G	1000	
8	CLUSTER H	1000	
9	CLUSTER I	1000	
10	CLUSTER J	1000	
11	CLUSTER K	1000	
12	CLUSTER L	1000	
13	CLUSTER M	1000	
14	CLUSTER N	1000	
15	CLUSTER O	1000	
16	CLUSTER P	1000	
17	CLUSTER Q	1000	
18	CLUSTER R	1000	
19	CLUSTER S	1000	
20	CLUSTER T	1000	
21	CLUSTER U	1000	
22	CLUSTER V	1000	
23	CLUSTER W	1000	
24	CLUSTER X	1000	
25	CLUSTER Y	1000	
26	CLUSTER Z	1000	
27	CLUSTER AA	1000	
28	CLUSTER AB	1000	
29	CLUSTER AC	1000	
30	CLUSTER AD	1000	
31	CLUSTER AE	1000	
32	CLUSTER AF	1000	
33	CLUSTER AG	1000	
34	CLUSTER AH	1000	
35	CLUSTER AI	1000	
36	CLUSTER AJ	1000	
37	CLUSTER AK	1000	
38	CLUSTER AL	1000	
39	CLUSTER AM	1000	
40	CLUSTER AN	1000	
41	CLUSTER AO	1000	
42	CLUSTER AP	1000	
43	CLUSTER AQ	1000	
44	CLUSTER AR	1000	
45	CLUSTER AS	1000	
46	CLUSTER AT	1000	
47	CLUSTER AU	1000	
48	CLUSTER AV	1000	
49	CLUSTER AW	1000	
50	CLUSTER AX	1000	
51	CLUSTER AY	1000	
52	CLUSTER AZ	1000	
53	CLUSTER BA	1000	
54	CLUSTER BB	1000	
55	CLUSTER BC	1000	
56	CLUSTER BD	1000	
57	CLUSTER BE	1000	
58	CLUSTER BF	1000	
59	CLUSTER BG	1000	
60	CLUSTER BH	1000	
61	CLUSTER BI	1000	
62	CLUSTER BJ	1000	
63	CLUSTER BK	1000	
64	CLUSTER BL	1000	
65	CLUSTER BM	1000	
66	CLUSTER BN	1000	
67	CLUSTER BO	1000	
68	CLUSTER BP	1000	
69	CLUSTER BQ	1000	
70	CLUSTER BR	1000	
71	CLUSTER BS	1000	
72	CLUSTER BT	1000	
73	CLUSTER BU	1000	
74	CLUSTER BV	1000	
75	CLUSTER BU	1000	
76	CLUSTER BV	1000	
77	CLUSTER BU	1000	
78	CLUSTER BV	1000	
79	CLUSTER BU	1000	
80	CLUSTER BV	1000	
81	CLUSTER BU	1000	
82	CLUSTER BV	1000	
83	CLUSTER BU	1000	
84	CLUSTER BV	1000	
85	CLUSTER BU	1000	
86	CLUSTER BV	1000	
87	CLUSTER BU	1000	
88	CLUSTER BV	1000	
89	CLUSTER BU	1000	
90	CLUSTER BV	1000	
91	CLUSTER BU	1000	
92	CLUSTER BV	1000	
93	CLUSTER BU	1000	
94	CLUSTER BV	1000	
95	CLUSTER BU	1000	
96	CLUSTER BV	1000	
97	CLUSTER BU	1000	
98	CLUSTER BV	1000	
99	CLUSTER BU	1000	
100	CLUSTER BV	1000	

STILT PARKING
 SHEET NO. 2

DDA



NOTE -
 The numbering of still car parking has been marked on the basis of feasibility submitted by engineering wing.
 ONLY USE FOR CAR PARKING (STILL) MARKING.

THE CLUSTER 100 CORRESPONDS TO 100.00 AS ALREADY ESTABLISHED AT SITE W/1 +100 ACCORDINGLY FOR THE CLUSTER 1, LOWER PLANNING AND DESIGN SHALL BE IN ACCORDANCE WITH THE CLUSTER 100 WHICH IS THE BASIS OF THE CLUSTER 100 CONSTRUCTION.

NOTES:
 1. ALL DIMENSIONS ARE TO FACE UNLESS OTHERWISE SPECIFIED.
 2. ALL WALLS ARE TO BE CONCRETE UNLESS OTHERWISE SPECIFIED.
 3. ALL FLOORS ARE TO BE CONCRETE UNLESS OTHERWISE SPECIFIED.
 4. ALL ROOFS ARE TO BE CONCRETE UNLESS OTHERWISE SPECIFIED.
 5. ALL DOORS ARE TO BE OPENING OUTWARD UNLESS OTHERWISE SPECIFIED.
 6. ALL WINDOWS ARE TO BE OPENING OUTWARD UNLESS OTHERWISE SPECIFIED.
 7. ALL STAIRS ARE TO BE OPENING OUTWARD UNLESS OTHERWISE SPECIFIED.
 8. ALL LIFT SHAFTS ARE TO BE OPENING OUTWARD UNLESS OTHERWISE SPECIFIED.
 9. ALL SERVICE AREAS ARE TO BE OPENING OUTWARD UNLESS OTHERWISE SPECIFIED.
 10. ALL UTILITY AREAS ARE TO BE OPENING OUTWARD UNLESS OTHERWISE SPECIFIED.

D. A HOUSING COMPLEX
 AT VASANT KUNI, NEW DELHI
 ON MEHRABADI MAHAPALDI ROAD

GROUND FLOOR PLAN

SCALE - 1/100
 DATE - 10/11/01
 DRAWN BY - [Signature]
 CHECKED BY - [Signature]

STILL PARKING
 SUBBLOCK 'F'
 OF